

HARDWARE & ACCESSORIES

Pulls, latches, knobs, miscellaneous



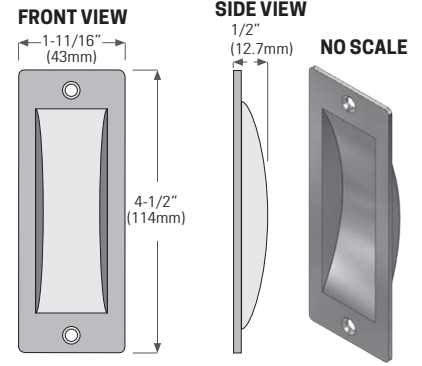
KT189 Bifold door knob (white plastic)



KT168 Flush pull, chrome 2-1/8" (54mm) hole diameter x 7/16" (12mm) depth



KT166 Flush pull, chrome 3/4" (20mm) hole diameter x 5/16" (8mm) depth



KT174BRZ Flush pull, bronze
KT174CH polished chrome
KT174DCH dull chrome



KT179CH Keyed lock for pocket door or bypass door. 1-3/8" or 1-3/4" door thickness



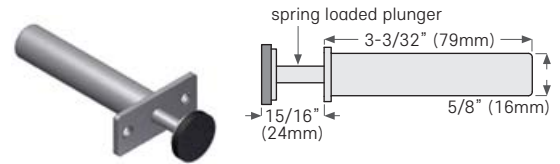
KT157 Wrench for KT15, KT40, KT50 & KT53



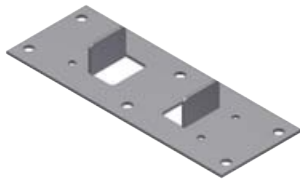
KT155 Wrench for KT14, KT25, KT28, KT29, KT43, KT45 & KT48

Bumper Stop / Spring Loaded Auto Return for Pocket Doors

Bore hole size 11/16" (17mm) x 3-1/4" (83mm)
Location of hole is 3" (76mm) up from center of door



KT172-40 For doors up to 40 lbs. (18 kg)
KT172-80 For doors up to 80 lbs. (36 kg)

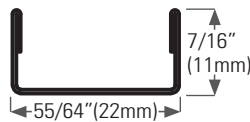


KT143 Floor bracket for KD pocket door frame split jamb



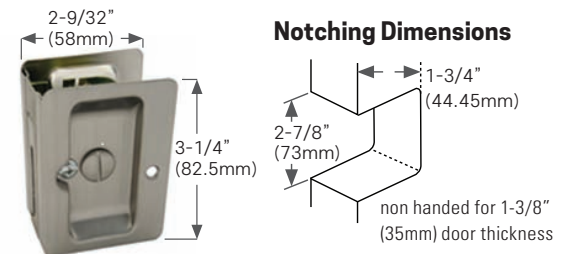
KT144 bracket for KD pocket door frame header

Pocket Door Frame Stiffeners

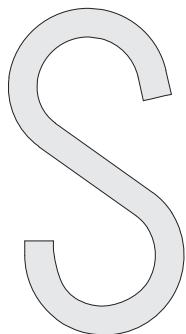


KT81 steel stiffener, 81"
KT84 steel stiffener, 84"
KT96 steel stiffener, 96"

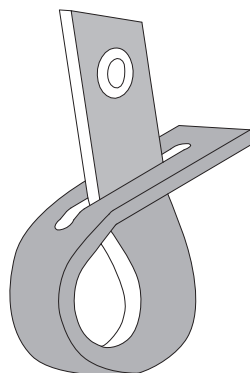
Pocket Door Privacy or Passage Set



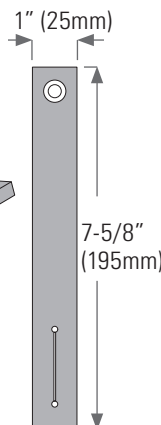
KT177CH Privacy, bright chrome
KT177DCH Privacy, dull chrome
KT178CH Passage, bright chrome
KT178DCH Passage, dull chrome



KT158 S hook (metal) for KT31HANGER

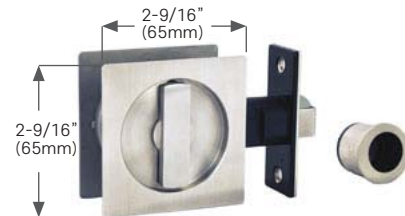


KT159 Leather strap, for KT158 S hook



Pocket Door Privacy or Passage Set

For 1-3/8" door thickness



KT175SS Privacy, brushed stainless steel
KT175PSS Privacy, polished stainless steel
KT176SS Passage, brushed stainless steel
KT176PSS Passage, polished stainless steel