

KrisTrack® KT29KIT Wall Mount (pocket less) Door Track & Hardware

Maximum door weight 150 lbs (60 KG) 2 hangers surface mounted with fascia. KT Fascia optional.

INSTALLATION INSTRUCTIONS

ARCHITECTURAL SPECIFICATIONS

Maximum door weight: 150 lbs (60 kg) = 2 hangers.

Min & max door thickness: 1-3/8" (35mm) only

Maximum capacity: Width and height of the door may vary beyond standard sizes provided the weight of the door does not exceed the maximum weight listed above.

Vertical adjustment: 3/8" (9.5mm).

Track: Extruded aluminum, mill finish. 9 stock lengths available, refer to price list.

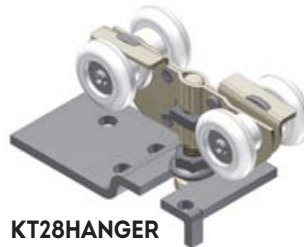
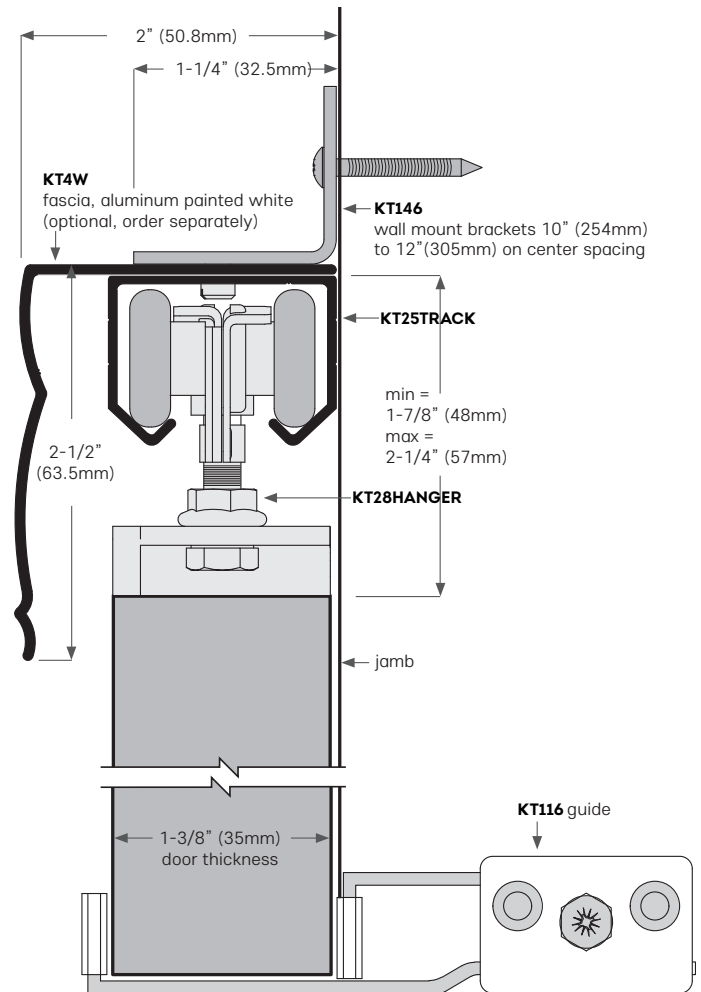
Hanger: Plated steel, 4 plastic wheels, ball bearing.

Options: KT4W fascia aluminum, painted white.

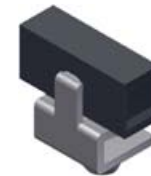
Hardware kits: for 1 door application, consists of (poly-bagged) KT28HANGER (2 ea) hangers, KT116 (1 ea) jamb mounted guide. KT126 (2 ea) intrack bumper stop, KT146 (7 ea) wall mounted brackets, KT155 (1 ea) wrench, installation sheet plus all screws.

PLEASE NOTE: KT146 wall mount brackets should be mounted 3" (76mm) from each end of track and 11" (279mm) on centre in between on 72" (1828mm) track. Use same spacing on longer lengths.

ALL DRAWINGS NO SCALE



KT28HANGER



KT126 Intrack bumper door stop



KT102 Floor guide (plastic)

Head Office & Manufacturing Centre - Vancouver, Canada

7470 Buller Avenue, Burnaby, B.C. V5J 4S5 Canada • Ph: (604) 451-1080 • Fax: (604) 451-1140 • info@theDSgroup.com
Outside Vancouver, BC use toll free numbers Ph: 1-888-520-9009 Fax: 1-800-567-2887

Branch Offices & Distribution Centres

Toronto, Canada & Los Angeles, USA

Eclipse Architectural® Corporate Showrooms

Vancouver & Toronto, Canada • Los Angeles, California, USA

THE DS GROUP IS THE BRAND IMAGE OF A.K. DRAFT SEAL LTD.