

KT-Frame Rm Or HKD Series: Pocket Door Wood Frames Single & Double

The RM (Ready Made style) is fully assembled for quick and easy installation.

The HKD is designed for ease of shipping and to minimize storage requirements. Chance of frame damage during transport is lessened due to compact packaging. Flat jamb, bottom rail and header are strapped to frame cage as shown below. Assembly takes approximately 10 to 20 minutes.

Frames built for 4-1/2" (114.3mm) wall thickness are designed to hold doors 1-3/8" (34.92mm) thick.

Frames built for 6-1/2" (165.1mm) wall thickness are designed to hold doors up to 1-3/4" (44.45mm) thick.

Hardware Kit not Included, order separately.

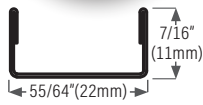
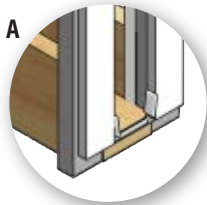
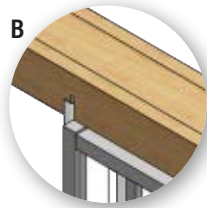
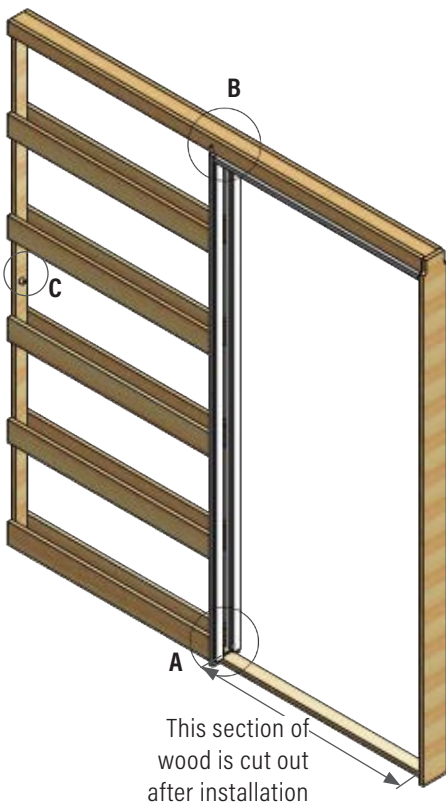
ROUGH OPENING (RO) RO in width: 2 times the door size plus 2" (51mm)
 RO in height: 4-1/4" (108mm) more than door height
 Double pocket door frame: 4 times door width, + 2" (50.8mm)

MAX DOOR WEIGHT **KT35PDKIT:** 100 lbs (45 kg) = 2 hangers (KT35HANGER)
KT38PDKIT: 132 lbs (60 kg) = 2 hangers (KT38HANGER)
KT40PDKIT: 220 lbs (100 kg) commercial application = 2 hangers (KT40HANGER)

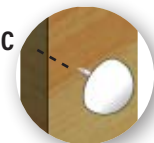
ONE FRAME, 2 OPTIONS

RM (READY MADE) Complete assembled frame

(Hardware kit not included with frame, order separately)



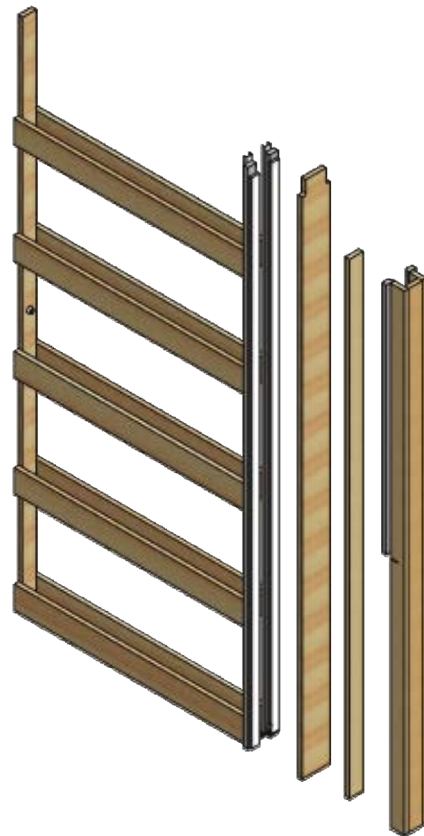
KT steel stiffener
(full height on split jamb)



KT122 Bumper stop, nail on, attach to frame

HKD (HALF KNOCK DOWN) Half assembled frame

(Hardware kit not included with frame, order separately)



NOTE: replace all track screws with # 8 x 1-1/2" (38mm) screws (included) after frame is installed and before drywall.

Standard size frames available in both single and double, for 4-1/2" (114mm) and 6-1/2" (165.1mm) wall thickness:

1'6" x 6'8" (457mm x 2032mm)	2'4" x 6'8" (711mm x 2032mm)	2'10" x 6'8" (63mm x 2032mm)
2'0" x 6'8" (609 mm x 2032mm)	2'6" x 6'8" (762mm x 2032mm)	3'0" x 6'8" (914mm x 2032mm)
2'2" x 6'8" (660mm x 2032mm)	2'8" x 6'8" (812mm x 2032mm)	3'0" x 7'0" (914mm x 2134mm)

Custom made frames are available and are non returnable, consult factory.

KT-Frame Rm Or HKD Series: Pocket Door Wood Frames Single & Double

One Track, Three Hanger Choices:



KT35PDKIT for 1 door application: (Hardware kit **not included** with frame, order separately)
 KT35HANGER (2 ea) hangers, KT107 (1 ea) jamb mounted guide, KT155 (1 ea) wrench, installation sheet plus all screws.

For biparting pocket doors order two kits (KT35PDKIT).

Residential, max door weight: 100 lbs. (45 kg) = 2 hangers



KT38PDKIT for 1 door application: (Hardware kit **not included** with frame, order separately)
 KT38HANGER (2 ea) hangers, KT107 (1 ea) jamb mounted guide, KT155 (1 ea) wrench, installation sheet plus all screws.

For biparting pocket doors order two kits (KT38PDKIT).

Residential, max door weight: 132 lbs. (60 kg) = 2 hangers



KT40PDKIT for 1 door application: (Hardware kit **not included** with frame, order separately)
 KT40HANGER (2 ea) hangers, KT107 (1 ea) jamb mounted guide, KT155 (1 ea) wrench, installation sheet plus all screws.

For biparting pocket doors order two kits (KT40PDKIT).

Commercial, max door weight: 220 lbs. (100 kg) = 2 hangers

Typical pocket door frame construction

Example shown for standard 3' (915mm) x 6'-8" (2032mm) door

